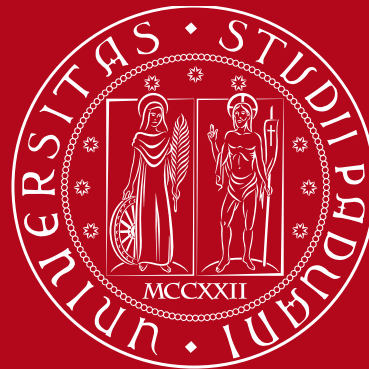


ANIMAL CARE

1222 • 2022
800
ANNI



UNIVERSITÀ
DEGLI STUDI
DI PADOVA

WELCOME DAY A.Y. 2025/26

****The meetings will be also held online for students still abroad, please register at the following link: <https://unipd.zoom.us/joining/register/x6rYpAeSLirRXphEZ40Lw>**

1222•2022
800 ANNI



UNIVERSITÀ
DEGLI STUDI
DI PADOVA



WELCOME DAY ANIMAL CARE
A.Y. 2025/26

Dept. of
Comparative
Biomedicine
and Food
Science

BCA



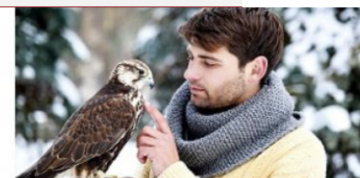
1222·2022
800
ANNI



UNIVERSITÀ
DEGLI STUDI
DI PADOVA

www.agrariamedicinaveterinaria.unipd.it/en/animal-care-1

WEB resources



Future matricole | Studentesse e studenti | Laureato e laureati | Personale | Cittadinanza e territorio | X

Menu ▾ Didattica ▾ Corsi di laurea ▾ Agraria e medicina veterinaria ▾ > Agraria e medicina veterinaria

SHARE    

Corso di laurea in

Animal Care

Classe: L-38 - Scienze zootecniche e tecnologie delle produzioni animali



www.unipd.it/en/animal-care

Bachelor's (First Cycle) and Master's
(Second Cycle) degrees

- Animal Care
- Academic life (links)
- Animal Care: Course outline and objectives
- Apply to Animal Care
- Career opportunities for Animal Care graduates
- Contacts
- Field experience
- Recognition of previous studies for future Animal Care students
- Traineeships
- Useful links for newly enrolled students
- Biotechnologies for Food Science
- Food and Health
- Forest Sciences
- Italian Food and Wine
- Sustainable Agriculture

PhD programs

Animal Care



The Bachelor targets students interested in the field of animal contexts, offering a unique educational pathway in Europe. The specific learning objectives meet the requirements of professionals employed in companies, private and public organizations in

The programme



S



Resources

COURSE OUTLINE
AND OBJECTIVES

NEWLY ENROLLED
STUDENTS

SURVIVAL GUIDE

CAREER
OPPORTUNITIES

ACADEMIC LIFE

CONTACTS

APPLY

TRAINEESHIPS

GRADUATION

RECOGNITION OF
PREVIOUS STUDIES

THE CAMPUS



ATTENDANCE **compulsory**

60% Frontal lectures

-In presence

(Online not synchronous
only if authorized)

60% Practicals

-In presence

(Online only if authorized
with customized activities)



Animal care key people

- **Course coordinator** prof LAURA CAVICCHIOLI
- **Course vice coordinator** prof PAOLO MONGILLO
- **OFA+incoming students admission and activities** prof Cristina Ballarin
- **Head of the AC traineeship commission** prof Giorgio Marchesini

- **Animal care Council:** all the teachers + representative students
G. Borges De Souza, O.O. Waris Ali, M. Mushtaq (2nd year), A. Pizzato and G. Levhar (3rd year)

G.d.R:

5 Teachers + 4 stakeholders, + 1 admin staff + representative students

- riccardo.maffei@studenti.unipd.it (3rd year) **RICCARDO**
- gul.levhar@studenti.unipd.it (3rd year) **GUL**
- giovanna.borgesdesouza@studenti.unipd.it (2nd year) **GIOVANNA**
- warisali.omarosman@studenti.unipd.it (2nd year) **WARIS**
- minhajmushtaq.xxx@studenti.unipd.it (2nd year) **MINHAJ**

How can you contribute?

-Participation to GdR meetings

(at the end of winter exam session and during the summer session)

-**Mid course survey** (on the Moodle of each course): effectiveness and organization of the course

-**Final evaluation of the course** (Uniweb>Questionnaires)

>Assessment questionnaires on the educational activities

The screenshot displays the Moodle interface for the course 'AVP7077559 - GENERAL PATHOLOGY AND LABORATORY TECHNIQUES 2019-2020'. The top navigation bar includes the University of Padua logo and the course title. The main content area features a 'Mid-course survey on the effectiveness and organisation of online teaching' with tabs for 'Panoramica', 'Domande', 'Modelli', 'Analisi', and 'Risposte'. The 'Panoramica' tab is active, showing a welcome message and a 'Panoramica' section with 'Risposte inviate: 22' and 'Domande: 8'. On the right, a 'Student' sidebar menu lists various options, including 'Questionnaires', 'General questionnaires', 'Annual questionnaire', and 'Assessment questionnaires on the educational activities' (highlighted with a red circle). Below the sidebar, a 'Control panel' table shows the status of various processes, including 'expired - Available MAY', 'non modificabile', '0 available terms', and '3 prenotazioni'.

Mid-course survey on the effectiveness and organisation of online teaching

You are kindly asked to provide an assessment on the effectiveness and organisation of online teaching. Your responses will help to improve this course. This survey will remain anonymous and will be kept by the professor. Thank you

Panoramica

Risposte inviate: 22
Domande: 8

UNIWEB

ENG

LOG IN
select 'English' before logging in
MAIN MENU

QUESTIONNAIRES

ASSESSMENT QUESTIONNAIRES ON THE EDUCATIONAL ACTIVITIES

Student

- Reserved Area
- Logout
- Change Password
- Home
- Certificazione Unica
- Registrar's Office
- Course Registration
- Diploma attainment
- Tirocini e stage
- HomePage Stage
- Apply as an exchange student
- Iniziativa
- International mobility
- Mobility Exam Notices
- Questionnaires
- General questionnaires
- Annual questionnaire
- Assessment questionnaires on the educational activities

Control panel

Process	Status	To do list
Fees	expired - Available MAY	display
	non modificabile	
	0 available terms	
	3 prenotazioni	visualizza



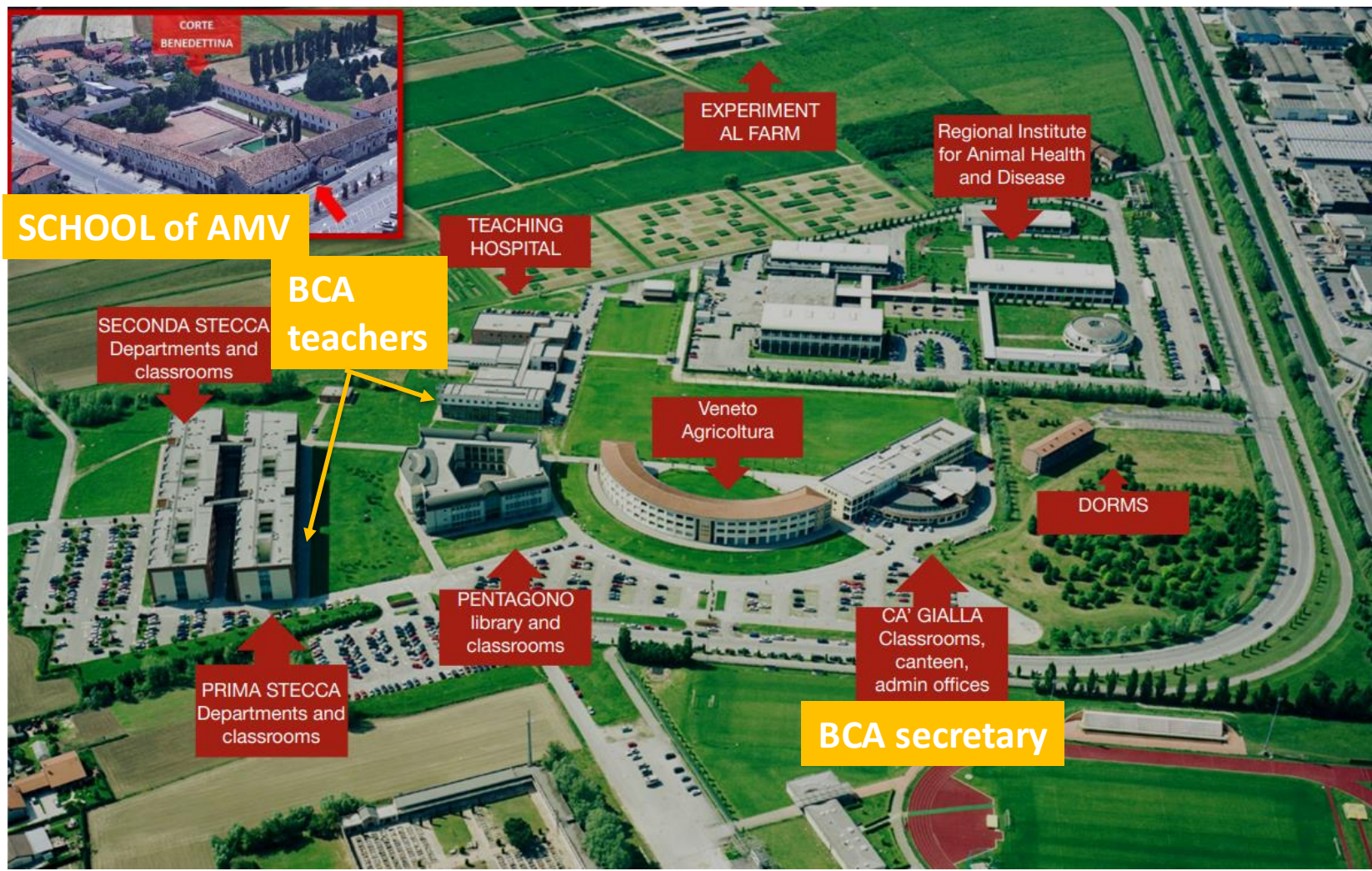
Animal care key contacts

- Cdl.animalcare@unipd.it prof Laura Cavicchioli, prof Paolo Mongillo, dr Monica Scotton DIDACTICAL SECRETARY
- International Desk - BCA cdl.animalcare@unipd.it dr Aurora Zecchinato
- agrariaveterinaria.studenti@unipd.it dr Giuseppe Riggiola
STUDENTS CAREER OFFICE (at the school of AMV): certification, career, fee, attendance etc
- agraria.medicinaveterinaria@unipd.it pres. Prof Roberto Mantovani
School of AMV: clarification on procedure, application, recognition of previous studies

Didactical activity of animal care

- tirocinioanimalcare.bca@unipd.it prof Giorgio Marchesini
AC traineeship (you'll be instructed at the end of the 2nd year)

Animal care key places



Supports for students

- Inclusion Office
- Tutor BCA

Student Services Office-Inclusion
inclusion.studenti@unipd.it

Phone +39 0498275038

provides resources and supports for students with physical disabilities, learning disabilities or other vulnerabilities.



To take advantage of the [dedicated free support for class attendance, study and exams](#) and any eventual [financial benefit](#) provided by law you must **send your certification/diagnosis to the Inclusion Unit.**

<https://www.unipd.it/en/inclusion-financial-benefits-and-accommodation>

PAY ATTENTION TO THE PROCEDURES:

<https://www.unipd.it/en/inclusion-support-lesson-attendance-individual-study-and-examinations>

request a meeting with the Inclusion Unit staff using [the online appointment request form](#).

For any other difficulties that can arise please contact:

BCA Course Referent

Marianna Pauletto

marianna.pauletto@unipd.it

Phone 0498272935



Programme coordinator

Laura Cavicchioli



BEST PRACTICES OF ACADEMIC CONDUCT

BACHELOR DEGREE PROGRAM IN ANIMAL CARE

UNIVERSITY OF PADUA



The present document is approved by the Degree Council of the Bachelor Degree program in Animal Care of the University of Padua and applies to the entire field of educational activities in Animal Care provided by permanent and temporary technical and teaching staff members. The members of the Bachelor Degree program in Animal Care community including students are bound to read and comply with these practices and, considering their own roles and responsibilities, to work to prevent behaviour that could constitute a breach of the rules contained herein.

students are committed to:

1. follow the main learning objective of the Bachelor, based on a deep conviction of the worth and dignity of the advancement of animal welfare knowledge and practices regarding animal issues. Their primary

responsibility is to make animal health and welfare their first consideration when attending to animals providing the most appropriate and adequate care according to their knowledge and following the indications provided by the teaching and technical staff;

2. actively participate in teaching and learning activities, and work in a cooperative, correct and respectful manner and recognizing the role of effective guidance of the teaching and technical staff;
3. comply with the culture of respect for the Institution and for the institutional figures and bodies committed in the organization and coordination of their training by respecting the institutional role of each, conducting themselves in a responsible manner and avoiding unauthorized actions that disturb these processes;
4. interact with the technical and teaching staff and colleagues being inspired by the principles of integrity, trust, cooperation and mutual correctness, personal respect, equal opportunities and shared responsibilities;



5. prevent all forms of direct or indirect discrimination of students and technical and teaching staff based on gender, age, characteristics, personal status or conditions, territorial origin or background, personal beliefs or orientations;
6. promote academic honesty, integrity and professionalism ensuring fair evaluation of student learning and refusing acts of dishonesty including, but not limited to, cheating, plagiarism, lying or fraud, unauthorized collaboration on evaluated coursework and misuse of University properties or resources;
7. avoid to copy, post, share or distribute any materials provided by an instructor for any purpose unless explicitly permitted by the instructor in writing;
8. adopt civil and responsible behaviour, preserving the functionality and decorum of teaching and learning context and preventing disruption or obstruction of teaching including interfering with an instructor's ability to teach a class or with other students' participation in a class and conduct that interferes with a speaker or presenter from delivering their message or an audience from receiving the message;
9. avoid the use of mobile phone cameras, electronic capture devices, or unauthorized audio or video recording, in an educational context where the expectation of privacy exists, without the teacher's knowledge and express consent;
10. comply with all Bachelor and University rules, regulations, appointments and policies and the Code of Ethics approved by University of Padova (14th May, 2009).

<https://www.agrariamedicinaveterinaria.unipd.it/en/sites/agrariamedicinaveterinaria.unipd.it/en/files/Best%20Practices%20of%20Academic%20Conduct%20AC%20EN.docx.pdf>



laboratory safety training

SSO credentials

<https://www.agrariamedicinaveterinaria.unipd.it/en/current-students/laboratory-safety-training>

"General training" (4 hours)

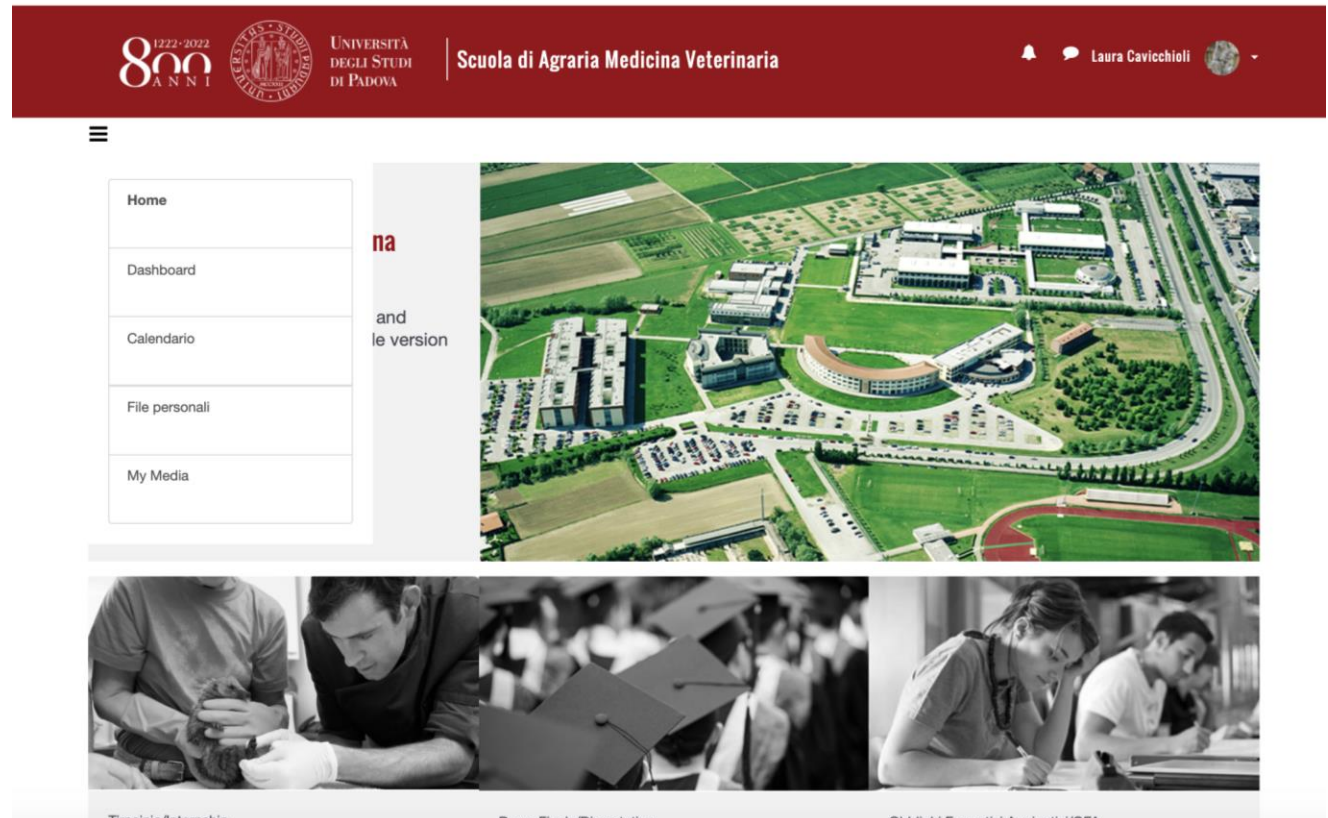
"Specialized course for workers involved in scientific activities in teaching, research and analysis laboratories (high risk) (12 hours)

After passing the tests, you will be issued a **PDF certificate** that you have to keep until the end of your course of study.



MOODLE Didactical platform

elearning.unipd.it/scuolaamv/



The screenshot displays the Moodle platform interface for the University of Padua School of Agricultural, Veterinary and Medical Sciences (Scuola di Agraria Medicina Veterinaria). The interface includes a navigation menu on the left with links to Home, Dashboard, Calendario, File personali, and My Media. The main content area features a large aerial view of the university campus, a section titled "na and le version", and three smaller images at the bottom: a person examining a small animal, a graduation ceremony, and students studying.

If you are in trouble/doubt: ask the TUTOR of School AMV presentation tomorrow

Choose your study plan!

UNIWEB

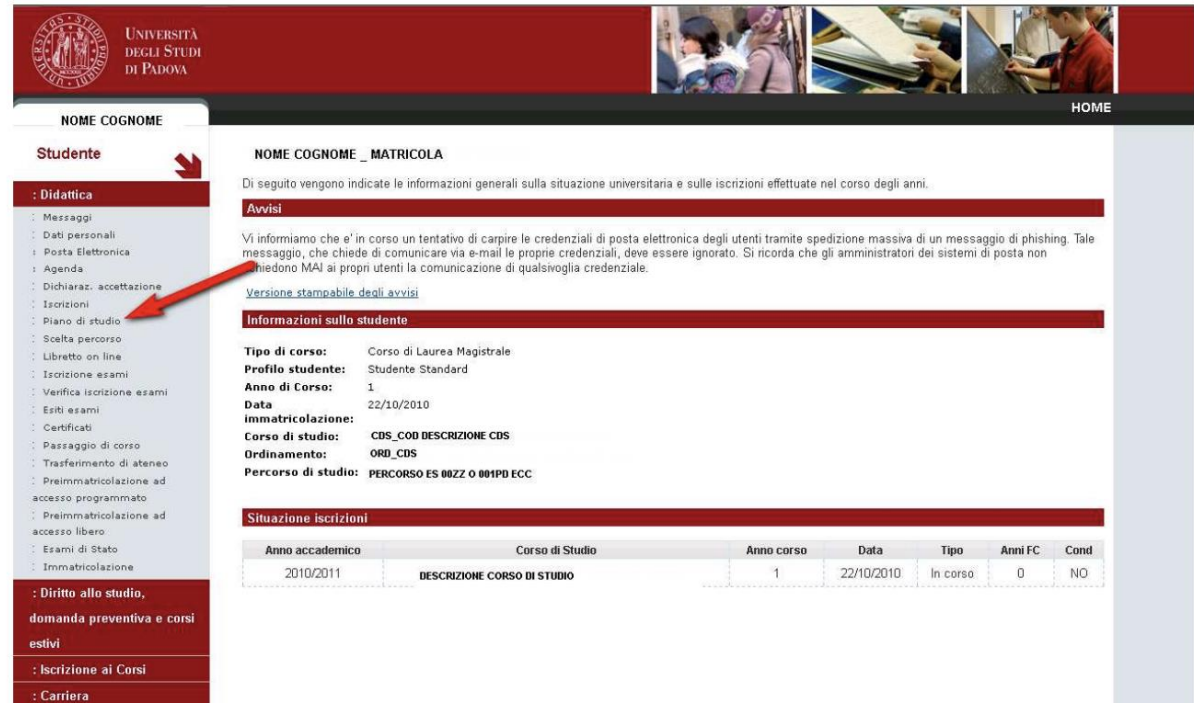
Click:

- Didactical activities
- Study plan

1st and 2nd years
of Animal care only
mandatory courses: insert them in your study plan

If you don't get the study plan approved you can't get access to the exams!

If you are in trouble/doubt: ask the TUTOR of School AMV presentation tomorrow



UNIVERSITÀ DEGLI STUDI DI PADOVA

NOME COGNOME

Didattica

- Messaggi
- Dati personali
- Posta Elettronica
- Agenda
- Dichiaraz. accettazione
- Iscrizioni
- Piano di studio
- Scelta percorso
- Libretto on line
- Iscrizione esami
- Verifica iscrizione esami
- Eriti esami
- Certificati
- Passaggio di corso
- Trasferimento di ateneo
- Preimmatricolazione ad accesso programmato
- Preimmatricolazione ad accesso libero
- Esami di Stato
- Immatricolazione

Diritto allo studio, domanda preventiva e corsi estivi

Iscrizione ai Corsi

Carriera

NOME COGNOME _ MATRICOLA

Di seguito vengono indicate le informazioni generali sulla situazione universitaria e sulle iscrizioni effettuate nel corso degli anni.

Avvisi

Vi informiamo che c'è in corso un tentativo di carpire le credenziali di posta elettronica degli utenti tramite spedizione massiva di un messaggio di phishing. Tale messaggio, che chiede di comunicare via e-mail le proprie credenziali, deve essere ignorato. Si ricorda che gli amministratori dei sistemi di posta non chiedono MAI ai propri utenti la comunicazione di qualsivoglia credenziale.

[Versione stampabile degli avvisi](#)

Informazioni sullo studente

Tipo di corso: Corso di Laurea Magistrale
Profilo studente: Studente Standard
Anno di Corso: 1
Data immatricolazione: 22/10/2010
Corso di studio: CDS_COD DESCRIZIONE CDS
Ordinamento: ORD_CDS
Percorso di studio: PERCORSO ES 00ZZ O 001PD ECC.

Situazione iscrizioni

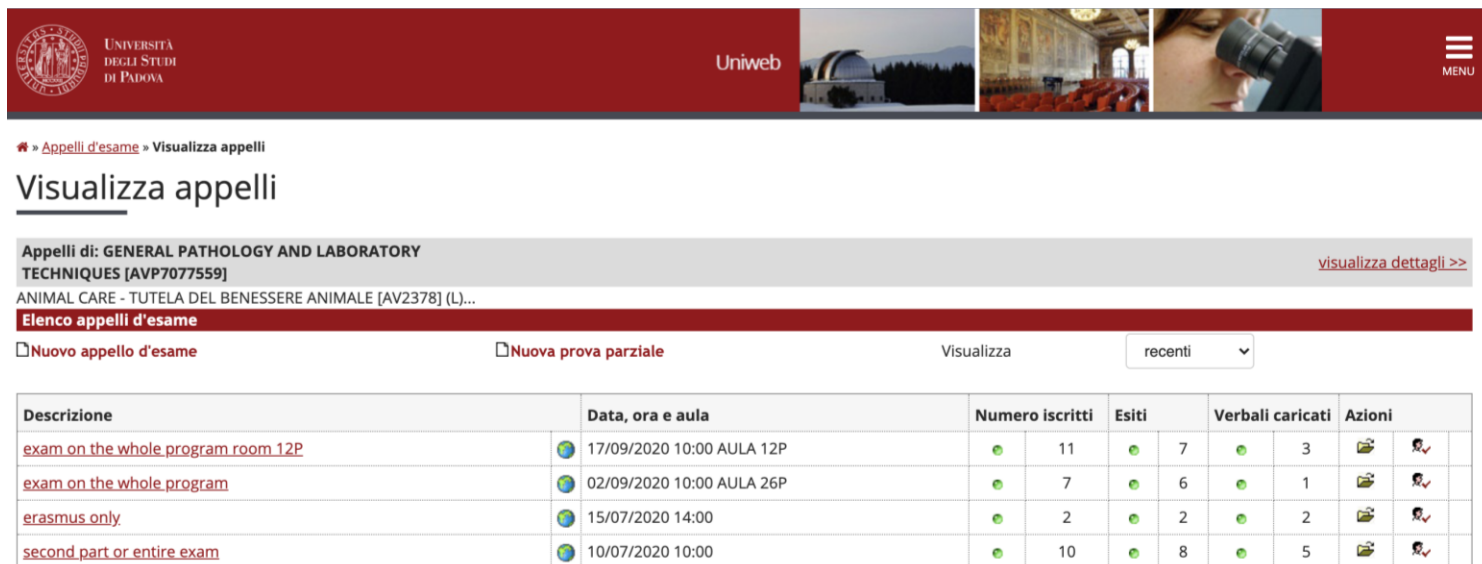
Anno accademico	Corso di Studio	Anno corso	Data	Tipo	Anni FC	Cond
2010/2011	DESCRIZIONE CORSO DI STUDIO	1	22/10/2010	In corso	0	NO

Suggestion: do it in the first month

UNIWEB

EXAMS: sign up registration

For exam modality: verify on the course syllabus!
Ask the teacher if you are in doubt!!!



UNIVERSITÀ DEGLI STUDI DI PADOVA

Uniweb

MENU

» Appelli d'esame » Visualizza appelli

Visualizza appelli

Appelli di: GENERAL PATHOLOGY AND LABORATORY TECHNIQUES [AVP7077559] [visualizza dettagli >>](#)

ANIMAL CARE - TUTELA DEL BENESSERE ANIMALE [AV2378] (L)...

Elenco appelli d'esame

☐ Nuovo appello d'esame ☐ Nuova prova parziale Visualizza recenti

Descrizione	Data, ora e aula	Numero iscritti	Esiti	Verbalì caricati	Azioni
exam on the whole program room 12P	17/09/2020 10:00 AULA 12P	11	7	3	
exam on the whole program	02/09/2020 10:00 AULA 26P	7	6	1	
erasmus only	15/07/2020 14:00	2	2	2	
second part or entire exam	10/07/2020 10:00	10	8	5	



If you are in trouble/doubt: ask the TUTOR of School AMV presentation tomorrow



UNIVERSITÀ
DEGLI STUDI
DI PADOVA



single courses students

The recognition of exams (for possible enrollment in the second year) takes place before July 20. Exams taken at the end of July, in August, or in September will be recognized in the following academic year.

Since we cannot guarantee admission to the second year, we strongly recommend that applicants also take part in the admission call for the first year (to be published in December 2025).



First year



Year 1 (57 CFU)

Sandro Azaele
Valeria Milotti

ANNUAL

Applied Mathematics and Physics
(4 CFU)

12 CFU

(8 CFU)

Semester 1

Semester 2

**Bioethics and
Legislation**

Bioethics

6 CFU

*Relevant Legislation
and Animal
Protection*

6 CFU

Barbara De Mori
Silvia Burti
Francesca Patrese

Applied Chemistry + Biochemistry

Massimiliano Magro
Lucio Litti

11 CFU

Comparative Animal Anatomy

Cristina Ballarin

10 CFU

**Animal Biology
and Genetics**

Enrico Negrisola
Valentina Bonfatti

General Biology

6 CFU

*Applied Animal
Genetics*

6 CFU



Second year

Year 2 (61 CFU)			
Semester 3 (33 CFU)		Semester 4 (28 CFU)	
Principles of Prevention and Control of Transmissible Animal Diseases	9 CFU	Basic Animal Nutrition and Feeding	6 CFU
Comparative Animal Physiology	8 CFU	General Concepts of Pharmacology-Toxicology	8 CFU
Behavioral Neuroscience for animal care	8 CFU	General Pathology and Laboratory Techniques	6 CFU
Animal Husbandry and Welfare	6 CFU	Comparative Animal Reproduction, Neonatology and Breeding Techniques	8 CFU
Communication skills	2 CFU		

**THIRD YEAR
CHOICE:
summer 2027**

Study plans:

- Animals in scientific research
- Wild and zoo animals
- Aquatic animals

Year 3 (62 CFU)

Free Elective courses 12 CFU

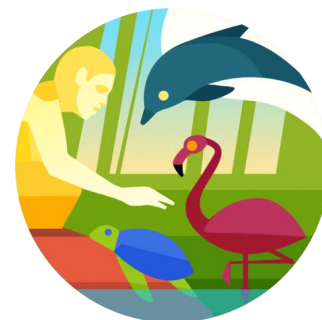
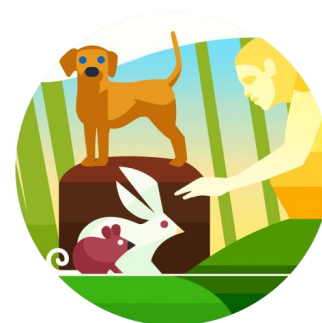
Semester 6 (18 CFU)

Practical training

12 CFU

Final Dissertation

6 CFU



Third year Animals in scientific Research Study Plan

Semester 5* (32 CFU)	
Animal care in research clinical settings	10 CFU
Comparative pathology	8 CFU
Animal Husbandry, Ethology and Welfare in scientific research	8 CFU
Experimental design and statistical analysis in animal research	6 CFU



Third year

Wild and Zoo Animals Study Plan

Semester 5* (32 CFU)	
Comparative Ecology and Ethology	10 CFU
Wild and zoo Animal Care in Clinical Settings	8 CFU
Principle of post-mortem techniques and tissue sampling	6 CFU
Wild and zoo Animals' Husbandry, Management and welfare	8 CFU



Third year Aquatic Animals Study Plan

Semester 5* (32 CFU)	
Experimental design and statistical analysis in animal research	6 CFU
Aquatic Animal Care in Clinical Settings	9 CFU
Post-mortem investigations and biomolecular techniques applied to aquatic vertebrates	8 CFU
Aquatic Animal Management, Ecology and Ethology	9 CFU





UNIVERSITÀ
DEGLI STUDI
DI PADOVA



Questions?



Any candidate for the first year?

Tasks:

- **Develop and facilitate communications** between students and teachers/coordinator
- Bring the students' **requests** to the **attention** of teachers/coordinators
- **Inform** and **advise** students (on time) on issues which **affect** students

Requirements:

- Positive, patient, respectful and proactive attitude

FUTURE MEETINGS: 1st semester

- REPRESENTATIVE STUDENTS 2nd and 3rd year
- FORMER STUDENTS