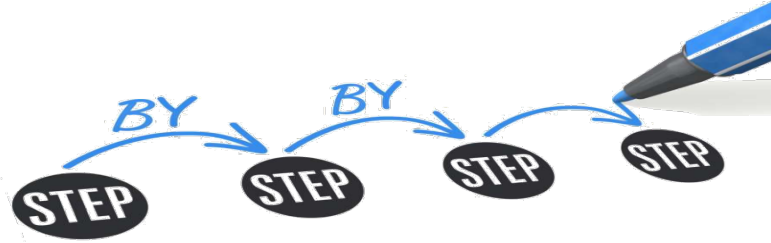


A low-angle photograph of graduates in black gowns and blue stoles, throwing their black mortarboard caps into the air. The caps are captured in mid-air against a bright blue sky with a large sun and scattered white clouds. The scene is celebratory and captures the moment of graduation.

Final exam!!!



- Choose your thesis project and reference professor (RF) and do a good job!
  - If requested, sign the obligation of confidentiality (before start)
- Submit the title (Uniweb Procedure) and ask its approval by the RF (-2 months)
- Submit Thesis Application (on Uniweb) and choose the session (-1,5 month)
- Upload your Thesis on Moodle (-20 days)
- Prepare your ppt presentation
- Discuss the Thesis with the Preparatory Commission
- Be there for your proclamation by the Graduation Commission!!



Three Types of Thesis are available



- 1. critical revision focused on the activities developed during the traineeship** (does not replace the Traineeship Final Report);
- 2. parts of experimental projects** linked to the learning objectives of the Bachelor;
- 3. critical revision of scientific literature** on a topic linked to the learning objectives of the Bachelor.

## a. Critical revision focused on the activities developed during the traineeship

- Traineeship in a Center offering AAI supported by donkeys
- Focus on
  - Main activities supported by the animals and connections with ethology of the species
- Traineeship in a Research Center
- Focus on
  - Different legal requirements and roles of people in charge of these aspects



## b. Parts of experimental projects

- Effects of some environmental enrichment protocols on the behaviour of individuals red kangaroo and wallaby housed in controlled conditions
  - Behavioral data collection and discussion
- Monitoring wolf distribution and understanding depredation patterns from attacks on livestock
  - DNA data and discussion of the genetic profiles (number of individuals, their genetic variability and taxon)
- Etc....



**May be Available  
on Moodle**

## c. Critical revision of scientific literature

- How is hawk vision better than human vision: A literature review on the visual ability of diurnal birds of prey
- All About Bottlenose Dolphins: Diet and Eating Habits
- Salmonellosis in Reptiles: a review.
- Etc.



# How to choose your thesis project..

You may....

- choose something you like  
or
- choose something you need  
or
- choose someone you like

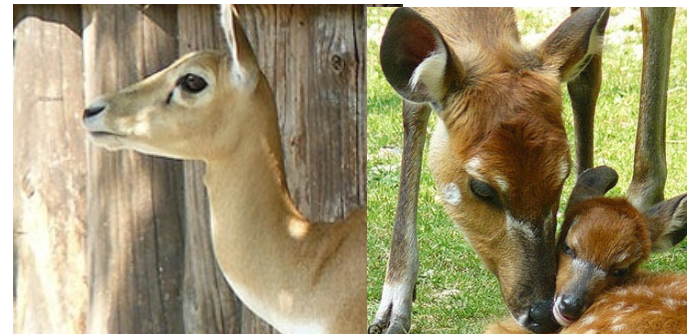


## AAA WE ARE LOOKING FOR WILLING STUDENTS

There is the chance for two students (who have a car to move about and are able to drive it) to be involved into two projects evaluating the effects of some environmental enrichment protocols on the behaviour of individuals belonging to different species housed in controlled conditions:

- Project 1 - species involved: red kangaroo and wallaby
- Project 2 – species involved: blackbuck and marshbuck

Experimental design: ABAB, i.e., 4 phases, each lasting at least 2 weeks. For each experimental phase there would be at least 6 days of behavioural observations. A preliminary observation phase, of approximately 15 days will precede the experimental phases. Final dissertation projects in ethology require time and effort.

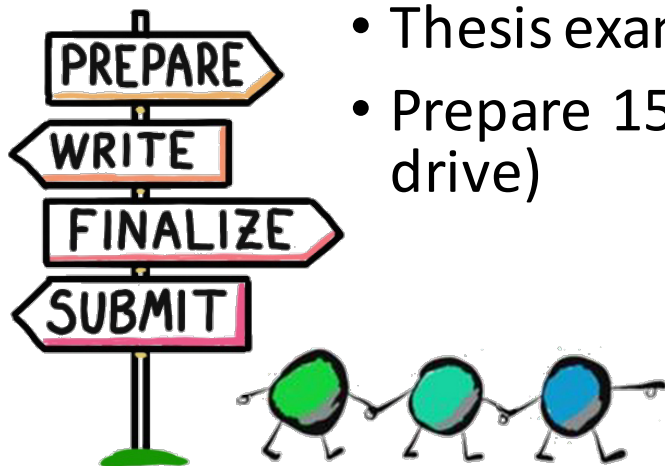


If interested, please contact: Dott.ssa Simona Normando ([simona.normando@unipd.it](mailto:simona.normando@unipd.it))  
Prof.ssa Lieta Marinelli ([lieta.marinelli@unipd.it](mailto:lieta.marinelli@unipd.it))



# Write your Thesis

- Agripolis Library organises short introductory courses on the use of electronic resources (in English)  
<http://bibliotecadigitale.cab.unipd.it/en/training-courses>
- Follow the recommendation of your RF
- Recommendation about format, title page template, etc. are available on the course webpage
- Thesis examples are available on the course webpage
- Prepare 15 min PowerPoint presentation (saved in a USB pen drive)



# Dissertation Process

My thesis is written in



WWW.PHDCOMICS.COM

reference [www.phd.comics.com](http://www.phd.comics.com)

# Student guide Diploma Attainment application Online Procedure (<https://www.unipd.it/manuali-uniweb>)

- Start the procedure at the beginning and not later than 10 days before the deadline (published on the school webpage)
- Check that your study plan is in "approved" status and that it is complete
- Submit Thesis application on Uniweb (Title and supervisor)
- Fill in the Alma Laurea questionnaire
- Choose the next suitable session for you
- Pay the participation fee (16 €)
- Register missing exams (if any)



# Final graduation mark determination

On a basis of 110<sup>th</sup>, consists of the sum of the weighted average of the exam marks and the increase of the mark, according to the following table

Criteria	Maximum points
Career speed <sup>1</sup>	3
Reference Professor's evaluation	1
Preparatory Commission's evaluation	3
Erasmus and/or traineeship abroad <sup>2</sup>	3
Traineeship Commission evaluation	2
<b>Total</b>	<b>12</b>

# Important people...

- **Reference Professors** can be professors who teach in any study courses coordinated by the School of Agricultural Science and Veterinary Medicine or a study course which involves professors of the Departments of Agripolis Campus.
- The **Preparatory Commission** is composed of 3 members, including the Study Course Coordinator (or a delegate) who chairs it. The members are chosen for every graduation appeal from a commission including all the study course professors. The Preparatory Commission has to assess the student through a Final Exam which **lasts approximately 20 minutes**, focused on the Final Exam report discussion.
- The Graduation Commission has to establish the final graduation mark, summing up the marks as outlined, and attribute the potential laude.

# YOUR THESIS COMMITTEE

Also known as: an impossibly difficult group to get together in one room but who nevertheless hold your future in their hands depending on their ability to reach a civilized consensus.



**Your Professor**

Simultaneously your biggest ally and your worst enemy. Will be the first to suggest you do more work.



**The Guru**

Only here for the free cookies. Don't forget to bring cookies.



**Adversary**  
~~The Asshole~~

Has bitter rivalry with your Professor and will argue the exact opposite view. Work this to your advantage.



**The Strawman/woman**

Nice guy. No opinions.



**The Assistant Professor**

Still doesn't believe just a few months ago they were on the other side just like you. Pretends to be an adult.

NONE OF THEM WILL ACTUALLY READ YOUR ENTIRE THESIS.